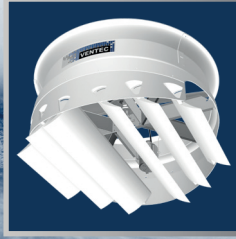


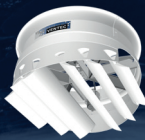
BETTER EFFICIENCY BETTER EFFICIENCY BETTER EFFICIENCY
**33%
MORE**
BETTER EFFICIENCY BETTER EFFICIENCY BETTER EFFICIENCY

MORE EFFICIENT
#1
86 000 CFM



Cyclone Plus
Fiberglass Recirculation Fan
patent pending





Cyclone Plus

Fiberglass recirculation fan

*patent pending

RECIRCULATION FAN

One of our most versatile products is the Cyclone Plus variable speed fiberglass recirculation fan. Traditional ceiling fans slowly push the hot air from the ceiling down to the floor. The Cyclone Plus can do this on low speed and then as the speed increases; it creates air velocity for maximum air throw and cooling.

APPLICATIONS

In dairy barns, Cyclone Plus creates very high air velocity for animal cooling, insect control, drying of bedding and employee comfort. Cyclone Plus unique airfoil deflectors direct the air over and under the animals. One Cyclone Plus can replace up to eight 36" basket fans and while using only half the power required for those. On low speed, you have an ideal winter fan for re-circulating air throughout the building, reducing humidity and recapturing trapped heat at the ceiling.

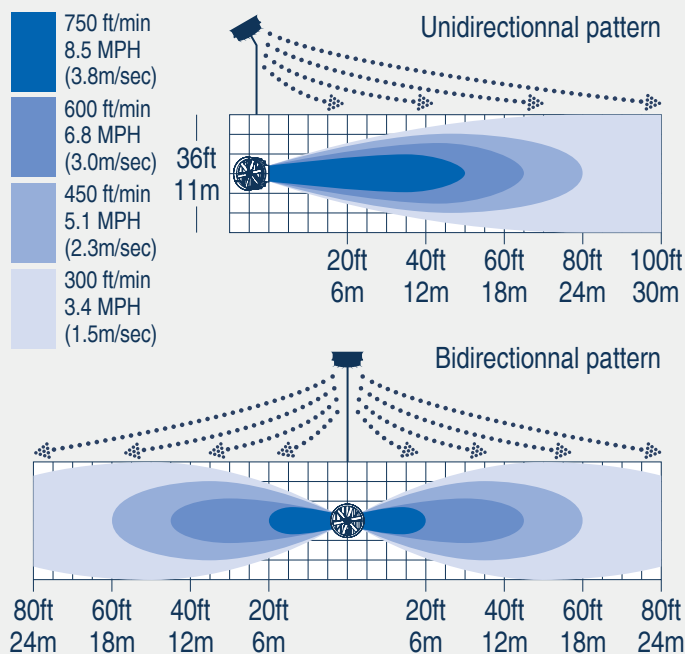
HIGH PERFORMANCE AND INNOVATIVE DESIGN

- Adjustable airfoil deflectors optimize air throw distance and direction.
- Performance enhancing intake fiberglass cone.
- Balanced heavy duty corrosion resistant six-paddle aluminum blades.
- Destratifying air at low speed, covering over 6 000 square feet.
- Optional variable frequency drive allowing smooth speed adjustments from 60 RPM to 245 RPM.
- Extremely quiet operation on every speeds.
- Automatic belt tensioner.

FEATURES

- Corrosion resistant fiberglass housing.
- 6 directional flow deflectors.
- Can be mounted on steel post, building column or suspended from the ceiling (all optional mounts).
- Optional variable frequency drive.

DIAGRAM OF THE AIR FLOW FAN

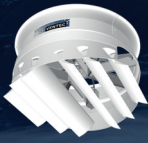


TECHNICAL SPECIFICATION

Propeller dimension	1.83m (72")			
HP	3.0			
Phase	1	3		
Voltage	230	208	230	460
Amperage *	13.2	8.6	8	4.3
Speed	Single	Variable		
RPM	245	60 @ 245		
Fan	Corrosion Resistant Steel			
Deflectors	100% PVC			
Blades	6-Aluminum			
Air Flow	2 435 m ³ /min (86 000 CFM)			
Efficiency	1.36 m ³ /min (48 CFM) per Watt			

* The Amps values depend on the motor manufacturer

Belt driven
 Available motors: 50 or 60 hertz
 Angle of attack of airflow deflectors adjustable



Cyclone Plus

Fiberglass recirculation fan

*patent pending

Cyclone Plus

New version

BETTER EFFICIENCY BETTER EFFICIENCY
**33%
MORE**
BETTER EFFICIENCY BETTER EFFICIENCY

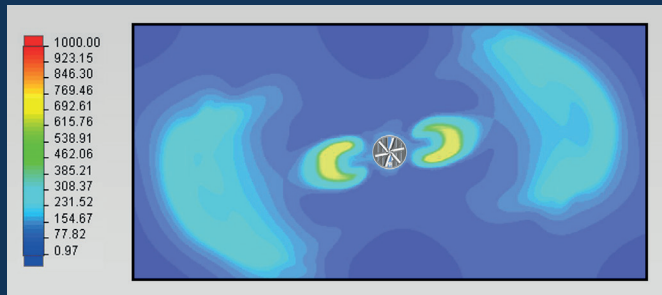


Figure 1 - Pattern of wind speed (ft / min) the new version of the Cyclone Plus fan maximum speed at 5 feet above ground.

Cyclone

Previous version

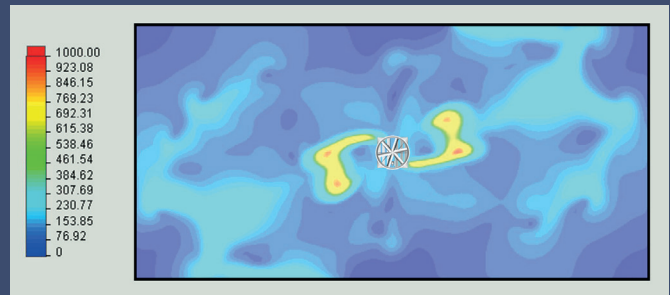
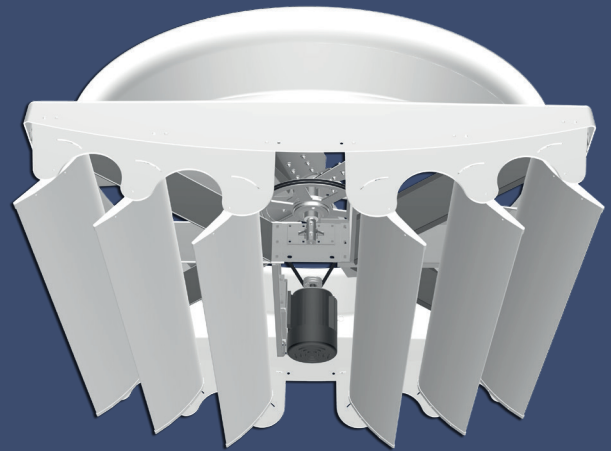


Figure 2 - Pattern of wind speed (ft / min) the previous version of the Cyclone fan maximum speed at 5 feet above ground.

THE ADVANTAGES OF CYCLONE PLUS

- **The Cyclone Plus is quieter.**
- **Less loss of air at the sides of the fan.**
- **Includes an automatic belt tensioner.**
- **The outlet air is more in line with the fan.**
- **The Cyclone Plus is better balanced and vibrates less.**
- **The belt change is easily done without removing the propeller.**



Ventec has been specializing in agricultural ventilation for over 20 years.

As a dynamic and innovative company, Ventec designs natural and mechanical ventilation systems improving air quality in agricultural buildings. Constantly innovating, Ventec develops energy efficient systems improving farm animals comfort and productivity.

Ventec has been a major player on the International market for many years. Ventec stands by the commitment to excellence and the expertise of its team. Whether you want to improve existing installations or undertake major new projects, you can count on our team of experts.

**Contact us for more information or
to locate our nearest distributor.**

5665 avenue Pinard, Saint-Hyacinthe, Quebec. Canada, J2R 1B7

450-796-5596

info@ventec.ca | www.ventec.ca

